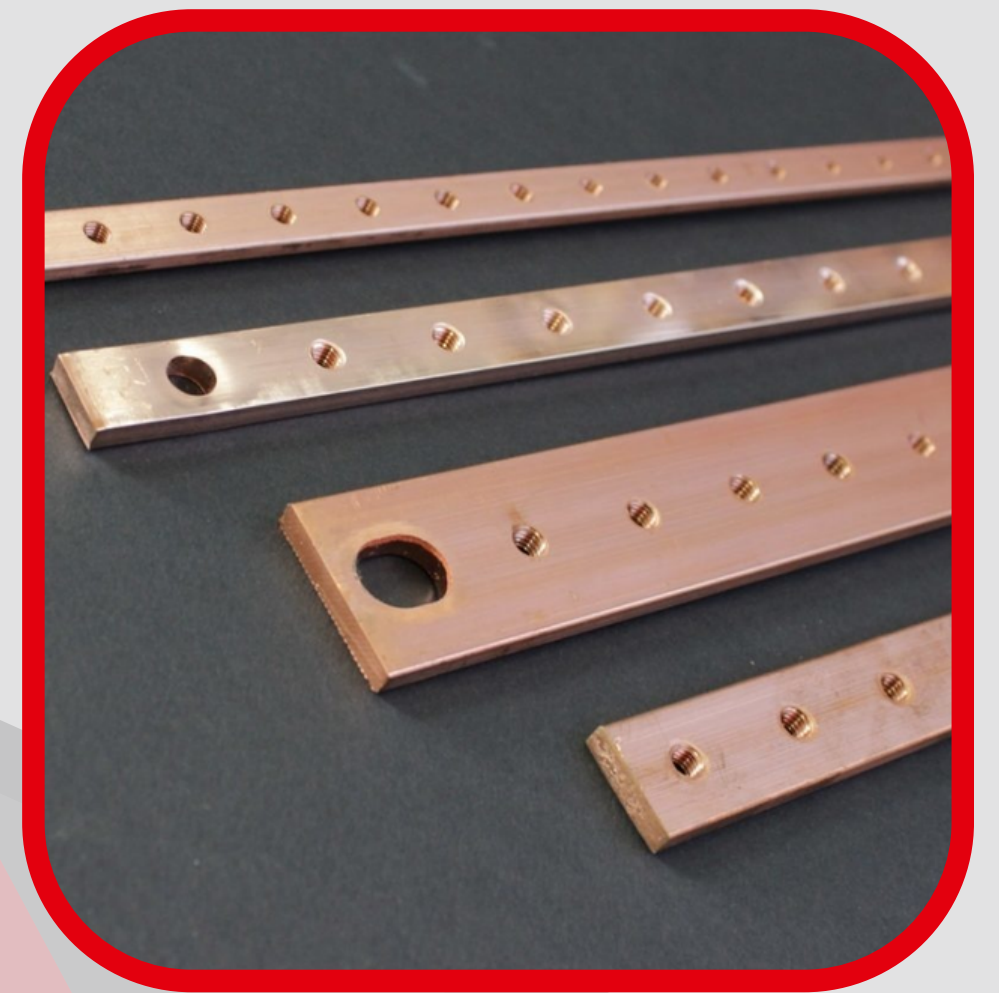


Tapped copper bars

- Copper tapped bars length 1000 mm.



Reference	Thread	Section (mm ²)	Center distance (mm)	Weight (Kg)	Packaging
BT1000-5.5/124	M5	12x4	18	0.40	1
BT2000-5.5/124	M5	12x4	18	0.80	1
BT1000-6.5/153	M6	15x3	15	0.36	1
BT1000-6.5/155	M6	15x5	25	0.61	1
BT1000-6.5/205	M6	20x5	25	0.76	1
BT1000-6.5/325	M6	32x5	25	1.22	1
BT2000-6.5/325	M6	32x5	25	2.80	1
BT1000-8.5/2010	M8	20x10	25	1.62	1
BT1000-8.5/3010	M8	30x10	25	2.53	1

* Other dimensions possible on request