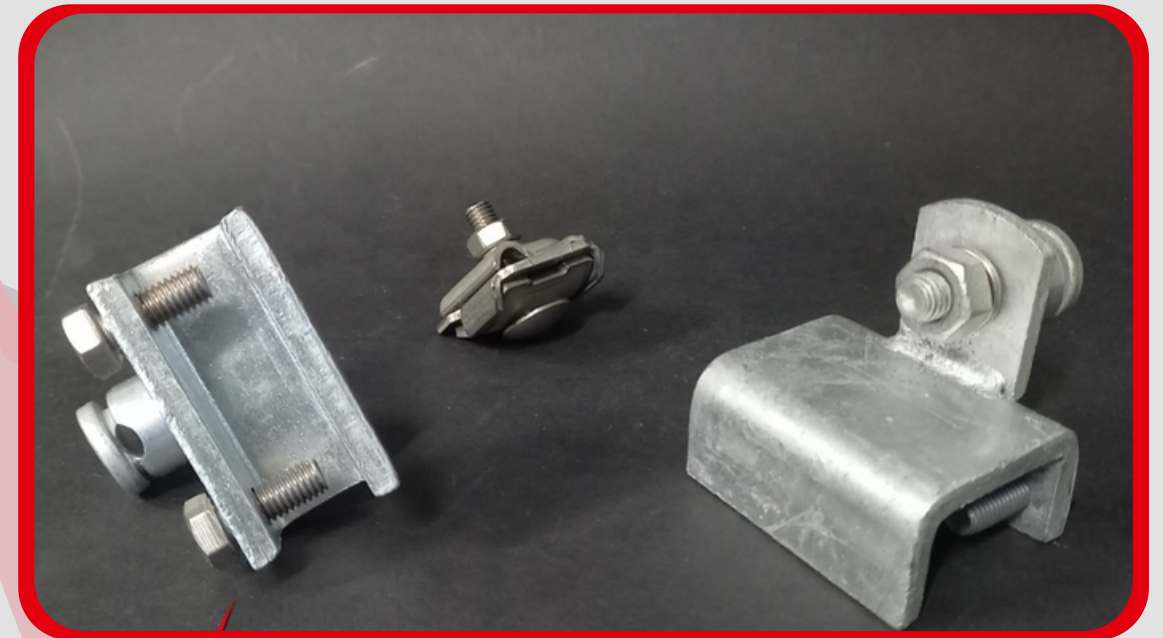


# Connections for steel structures

- **Mechanical connectors for connecting a metal frame and a grounding conductor.**



Reference	Material	Thickness of steel structure (mm)	Conductor diameter (mm)	Weight (Kg)	Packaging
<b>RICG</b>	Stainless steel	0 et 8mm	2.3 et 8 mm maxi	0.14	10
<b>RGCG-5/18</b>	Galvanized steel	5 et 18mm	6 et 10 mm maxi	0.28	5
<b>RGCG-18/35</b>	Galvanized steel	18 et 35mm	6 et 10 mm maxi	0.34	5